

CardMaster

Access and Control Systems

Now
Available With
Internet / Cellular
Connection



FEATURING

- Big 16 Character LCD Display
- Weather Proof Key Pad
- Heavy Duty Steel Box
- Powder Coat Finish
- Compact Design
- Swipe Reader
- Multiple Data Ports

888-487-5040

www.cardlockvending.com

info@cardlockvending.com

The best choice for **CONTROL** and **ACCOUNTABILITY**

- Fleet Fueling Sites
- Dealer Car Washes
- Gate Controls
- Bulk Plants
- Restroom Access
- Warehouses
- RV Dump
- Interval Access



CM-I

CardMaster Fuel Controller, 2 hoses, 999 accounts, individual unique PIN each card, 110/220 vac or 12/24 vdc, one miscellaneous 6 digit data entry field. 1500 Transaction memory.



CM-II

Enhanced CardMaster Fuel Controller, 2 hoses, 999 accounts, individual unique PIN each card, 110/220 vac or 12/24 vdc, four miscellaneous 6 digit data entry field. 750 Transaction memory.



Multiple CardMasters are very Cost Effective

The low cost of CardMaster makes it cost effective for installations of 3 - 4 - 5 and 6 hose sites. In addition to cost savings, a big benefit is that if a component fails on one CardMaster the site is not down, and the rest of the site continues to function. That is not true of systems with one central PC board.



CM-RF

Enhance your CardMaster (CM-I or CM-II) with RF serial communications. Save expense of pulling wires. RETROFIT existing dispensers with CM without adding low voltage conduits.



CM-GC

GateControl CardMaster used for access control 999 accounts, individual unique PIN each card, 110/220 vac or 12/24 vdc.



CM-DC

Control fleet car washes, trash compactors, RV dumps, and other devices using either timed authorization or relay controlled open (on) - closed (off) signal.

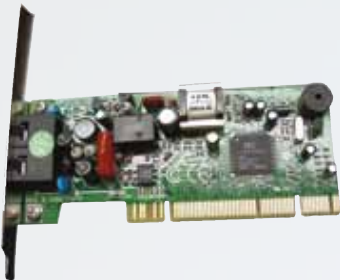
CardMaster

Access and Control Systems

No matter where you are you have complete access to your CardMaster.

CM-IM

CardMaster can be supplied with an internal telephone modem in places where service is provided. In cases where CardMaster will be sharing a normal voice line we offer the CM-TLS (telephone line sharing device).



CM-RF

To avoid trenching and conduits for serial communications we offer the popular alternative of RF (radio frequency) communications. The “sending” RF module is installed in the CardMaster. The “receiving” module mounts on the wall of the building. A serial cable is run from the “receiving” module to the PC. This option is highly popular and saves the cost and disruption of digging trenches, running conduits, and pulling cables.



CM-CSUSB

Connect your laptop to CardMaster at the island.



CM-LAN

CardMaster can be supplied with an internal Local Area Network adapter with Ethernet RJ45 capability. Normally LAN modules are limited to 350' between modules or “nodes”.



Now Available With Internet / Cellular Connection



CM-ECM

CardMaster's most recent addition is our "Ethernet/Cellular" modem. With this service the CardMaster is accessed directly from a PC (office, home, hotel room, etc) through an internet link. Access can be on any or all of the PC's in the office if desired, at no added cost. The internet link connects to our remote secure server, which in turn dials the cellular modem at the CardMaster. The efficiency is terrific and the savings can be considerable compared with installing a business line, paying monthly business line charges, and even paying long distance business rate charges.



Sub Zero or Harsh Climate?

CM-UEH

Cardlock Vending offers a multipurpose heated (thermostatically controlled) insulated enclosure.

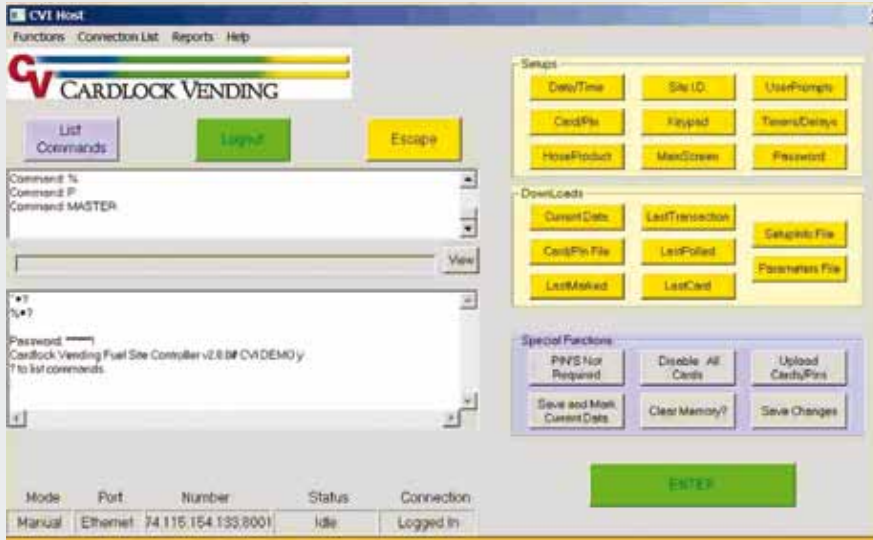
UEH is approximately 20" x 20" x 20". UEH mounts on our standard 48" pedestal. CVI isolates the electrical supply under an isolation panel. The isolation panel also functions as a mounting plate for the equipment installed in the enclosure. Pictured is our CardMaster.

LCD displays commonly used in card systems and other devices typically freeze at about zero degrees F. The UEH is occasionally used to house Journal Printers where an indoor location is not available.



About the Software

Cardlock Vending is very pleased to announce CM-HostCT.



CM-HostCT

Has been created to ease compatibility with Microsoft's rapidly changing operating systems which include XP, Vista, and Windows 7.

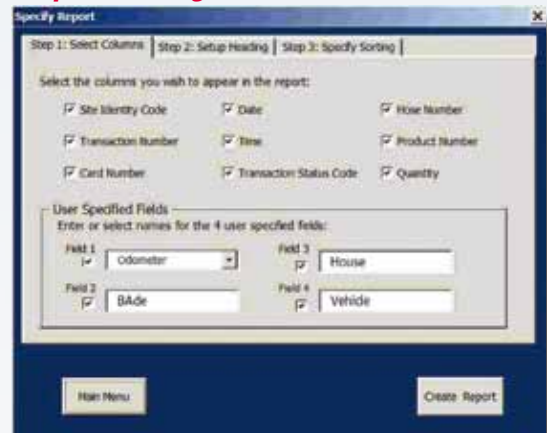
CM-HostCT simplifies connection to the ethernet serial port, dial out telephone, or an interface to our new Ethernet/Cellular service. CM-HostCT integrates with CardTransPorter report package assisting you to format spreadsheet reports. Below are the primary screens of CM-HostCT. Please go to our web-site library section for a downloadable CM-HostCT product manual for a full understanding of the value of CM-HostCT.

Data Report Generation Menu



CM-HostCT is a "point & click" program to connect your PCs to CardMaster. CM-HostCT significantly eases calling CardMaster from the PC, or connecting to a telephone modem, and "calling" a remote CardMaster via internet/cellular. CM-HostCT facilitates managing card authorizations, lock outs, PIN number assignments, and remote configuration of system parameters.

Report Sorting Criteria Menu



CM-HostCT

Significantly assists installers initial configure and supports service technicians, easing re-configuration.

Data Report (sample)

SITE	TRAN NUM	CARD NUM	DATE	TIME	TRAN STAT CODE	HOSE NUM	PROD CODE	ODOMETER	QUANTITY	Badge	Not Used	Vehicle No
1	895	0	10/14/2003	09:18	A				0.0			112
		0 Total							0.0			112
1	913	1	10/14/2003	22:23		7	4		0.0			985
		1 Total							0.0			985
1	914	4	10/14/2003	22:23		1	1	10096	93.2	855		112
		4 Total							93.2			112
1	898	6	10/14/2003	11:00		1	1	446108	45.9	780080		369
		6 Total							45.9			369
1	896	10	10/14/2003	09:27		1	1	112685	80.5	856		125
		10 Total							80.5			125
1	904	14	10/14/2003	16:22		1	1	127190	86.0	850		369

SYSTEM CONSOLES

- CMI-110v . . CardMaster I, 2 hoses, 1 miscellaneous field, 110/240vac. Up to 999 accounts, up to 1500 transactions.
- CMII-110v . . CardMaster II, 2 hoses, 4 miscellaneous fields, 110/240vac. Up to 999 accounts, up to 750 transactions.
- CMI-12v . . CardMaster I, 2 hoses, 1 miscellaneous field, 12/24 vdc power supply. - Vehicle mounted or solar panel powered.
- CMII-12v . . CardMaster II, 2 hoses, 4 miscellaneous field, 12/24 vdc power supply. - Vehicle mounted or solar panel 12v power insert.
- CMI-DC . . Use the CardMaster DC to control trash compactors, RV dumps, car washes at auto dealers and other devices with accountability.
- CMI-GC . . Use the CardMaster to control gates, restrooms and other limited access areas.

SOFTWARE

- CM-HostCT . . CM-HostCT terminal/polling program (replaces HyperTerminal) interfacing with CardTransPorter, CardMaster's Reporting Package, built on Microsoft Excel platform, enables flexible reports, variable field sorting, and totalizing. Requires Excel 2000 or newer.
- CM-HostU . . CM-HostU terminal / polling program to replace HyperTerminal. CM-HostU is for customers who already have CardTransPorter and wish to upgrade existing CardTransPorter.

ACCESSORIES

- CM-TP . . . Pedestal, 48" high.
- CM-SP . . . Pedestal, 6" high, for mounting to top of dispenser, provides an electrical interface box.
- CM-WM . . . Wall Mounting Bracket, angle steel plate with blue powder coat to match CardMaster (CM) box.
- CM-TVS . . . Transient Voltage Suppressor for RS-485 port on I/O board, supplied when CM is ordered without CM-IM, CM-RF, CM-LAN, or CM-ECM. CM-TVS helps reduce power surge or lightning damages through serial wiring.
- CM-RF . . . RF (Radio Frequency) serial communications module, for serial data port, or journal printer port (or one for each).
- CM-RFCable20 . . Cable, coaxial, 20 foot, for extending receiver antenna higher to overcome RF obstructions.
- CM-RS485Ad . . . RS-485/232 serial converter, with wiring terminal inputs, and DB25 female output port, with serial adapter DB25 M to DB9 M. Power supply is included.
- CM-Cable9S9M9F . . Cable, 9 foot serial, DB9 M x DB9 F.
- CM-CSUSB . . . Cable, serial DB9 M to USB.
- CM-CUSB4 . . . Hub, USB to multi-port USB (4 female USB ports).
 - CM-IM . . . Internal telephone modem board, installed in CardMaster. Consider below option to share a telephone line (fax or voice).
 - CM-TLS . . . Telephone line sharing device, use common telephone line for fax, voice, and CardMaster, switches by code input in dialing string.
 - CM-LAN . . . LAN interface module with software, local area or ethernet.
 - CM-ECM . . . Ethernet/cellular includes cellular modem, antenna kit and cables, installed in metal enclosure with thermostatic heater, with mounting plate. Requires annual service contract, see below. Compatible with CDMA or GSM cell service. Only available in US at this time.
 - CM-CDAS . . . Annual service contract, prepaid, contract direct with system owner. Owner can access CardMaster direct from any PC in system, or from a laptop at home or away in hotel rooms, anywhere internet access is available.
 - CM-UEH . . . Utility Enclosure supplied insulated with heater and thermostat for extremely cold environments. Unit may require it's own CM-TP pedestal for mounting.
 - CM-JP . . . Journal Printer, w/36-inch M x M cable, includes RS-485/232 converter with power supply, 8½" paper, dot matrix.