



CARDLOCK VENDING

Instructions on Using HyperTerminal® and Excel® to bring text data to a spreadsheet.

(April 18, 2002)

Setting up HyperTerminal®

Step 1 Establish either a modem connection (dial up on telephone), or a direct connection from your "PC" to the device (CardMaster, etc.) Note: port number may vary with your PC.

To copy a provided HyperTerminal file

If Cardlock Vending supplied a "CardMaster HyperTerminal®" file then the first step is to copy that file using the following Windows® menu steps from the "My Computer" button, normally on your Desktop:

Documents & Settings
Administrator
Start Menu
Programs
Accessories
Communications
HyperTerminal

To create a HyperTerminal file when you do not have one.

If you are programming your HyperTerminal® file then the parameters for the connection are (baud = 9600, data bits = 7, parity = space, and stop bits = 1). (Note: some programs will work better with 9600, 8, none, 1) To program that file use the following Windows® menu steps from the "Start" button:

Start Menu
Programs
Accessories
Communications
HyperTerminal

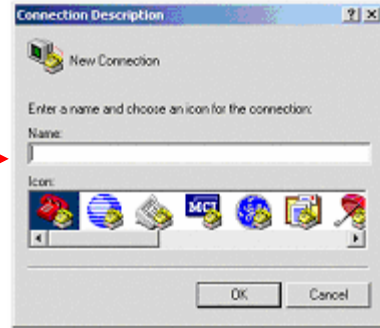
Importing CardMaster data to Excel®

www.cardlockvending.com customers call 888-487-5040

Please type the name of your New connection here:

i.e. CardMaster

Then press "OK"



The next screen, shown in the "connect to" box.

Go to lower white open field
And click on "dart" on right
Hand side. For direct connect you want to
change from "modem" to "Com 1" (or whatever
your direct connect serial port number is), and
then
press "OK".



The next screen to appear will be "COM1 Properties" as shown below. You will want to make the following changes, as shown

Note: CardMaster's serial port is designed for 7 data bits and space parity. For many applications if that does not seem to work change it to 8 data bits and parity = none.

Set Bits per second (Baud) to 9600

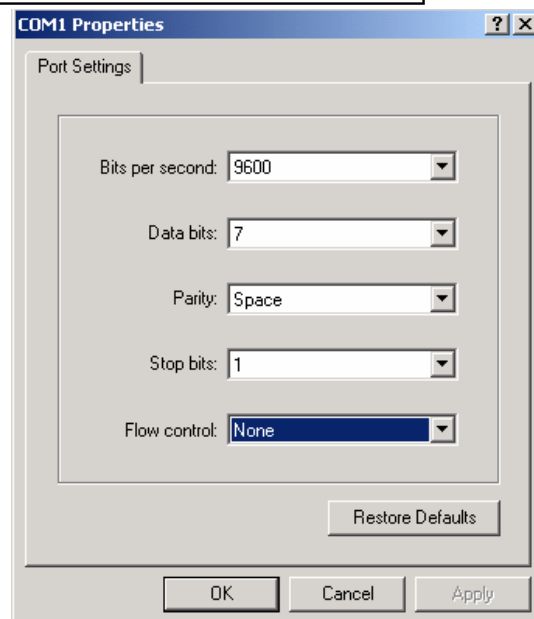
Data bits to 7

Parity to "space"

Stop bits to 1

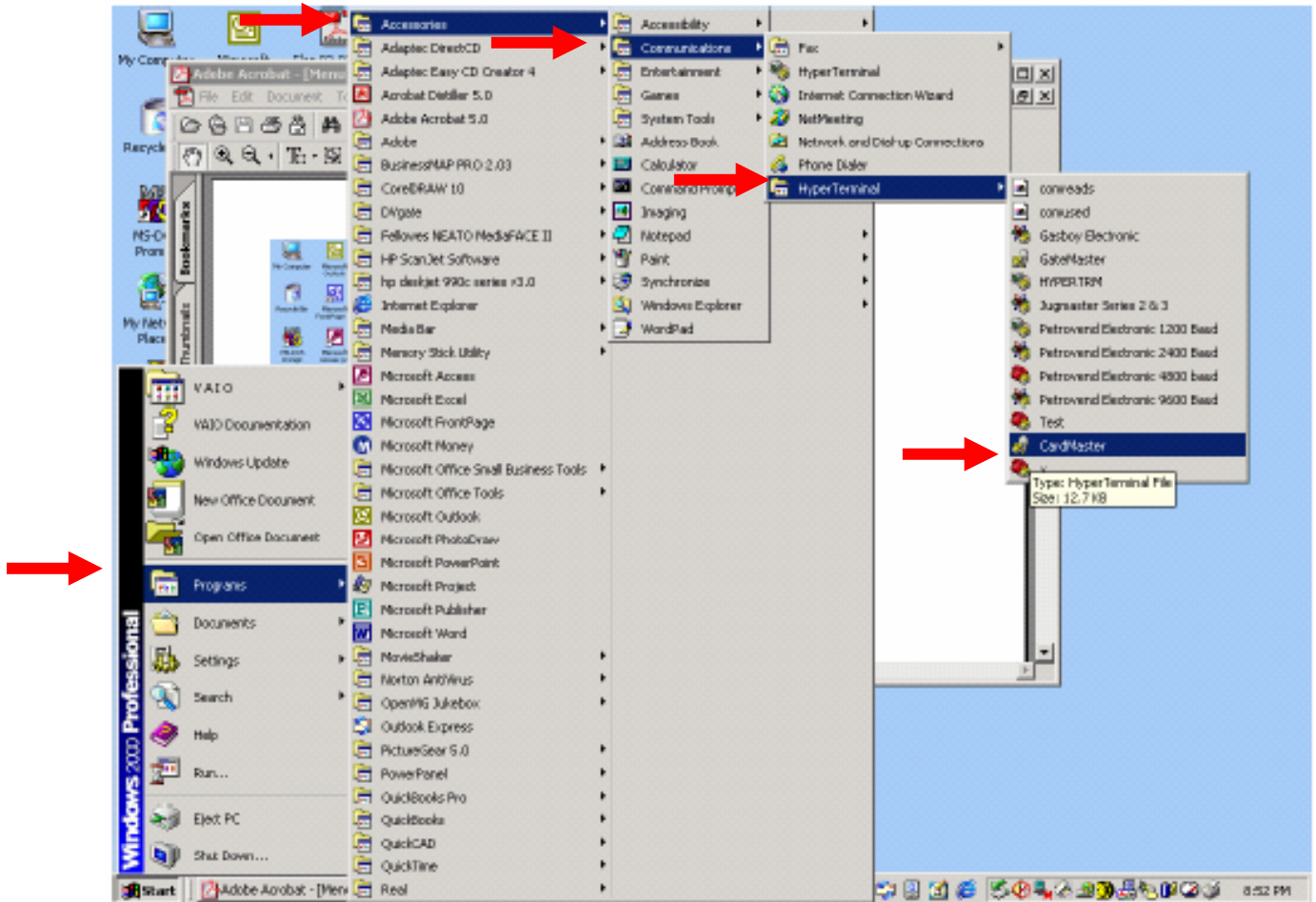
Flow control to "none"

Then press "OK". The go to top of main screen
box of HyperTerminal and press "file", and go
down to "save" and save the file set up before
proceeding to use HyperTerminal "CardMaster".



Step 2 – Open desktop menu by going
“start

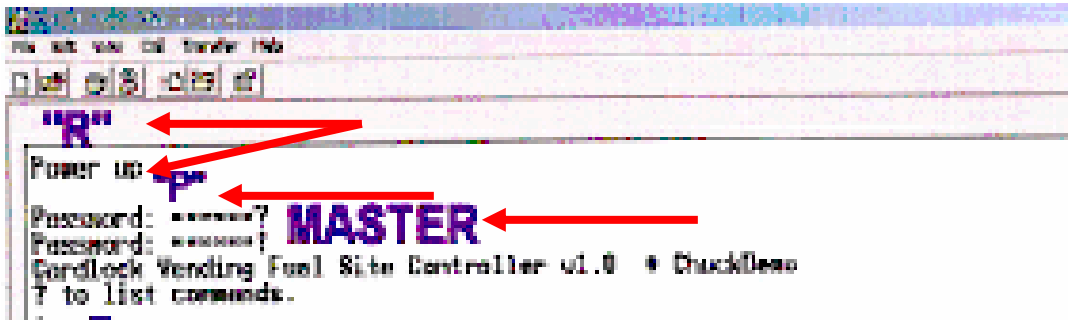
Accessories
Communications
HyperTerminal
CardMaster



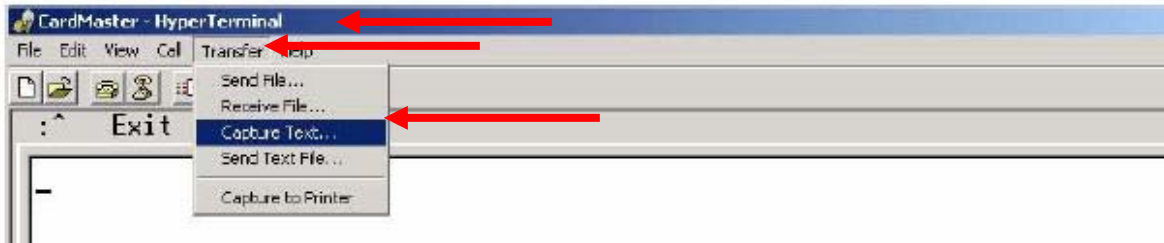
Enter “**R**” immediately after the semi-colon. This is a system reset command. The screen will display “Power Up” as a proper response. At the new semi-colon enter “**P**”. This is a request for the password function. Note: the password function will lock up after the 3rd wrong attempt, requiring a new “**R**” command, to reset, before trying “**P**” again.

The password must be entered in all upper case (capital) letters. i.e. “MASTER” (MASTER) is the default password loaded by the factory.

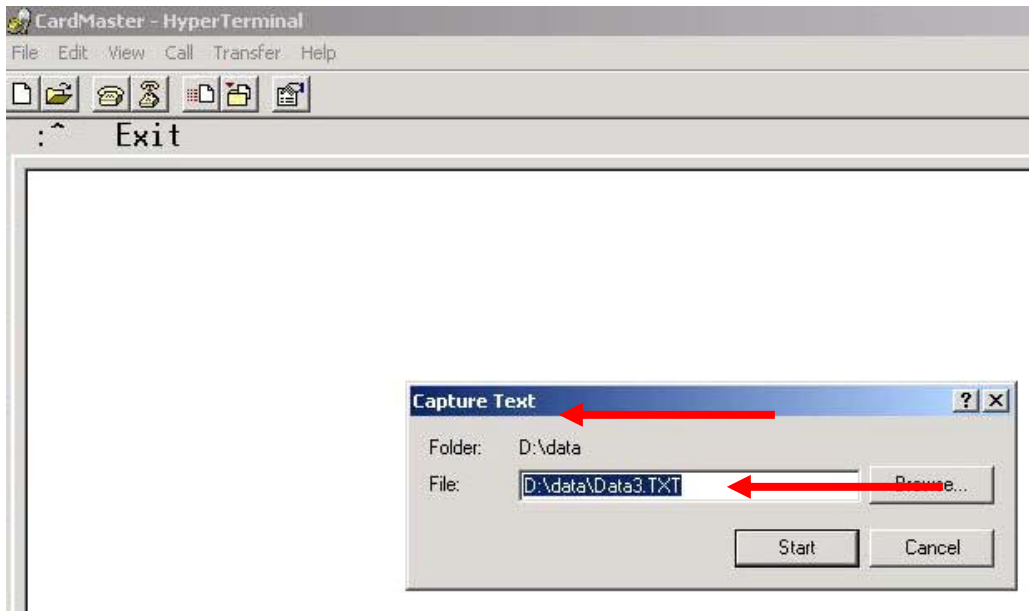
Then you will create the below screen by doing the following steps:



After clicking on “**CardMaster**” you will see “**CardMaster – HyperTerminal**”, and the first step is to click on “**Transfer**” on the top row of choices, and then click on “**Capture Text**” as a sub-category of “**Transfer**”.



You will then see



Type a name for the file that will be created while capturing the text data file from the Card-Master,
And press “start”.

In the above example we picked:

D:\	DRIVE		
	DATA	Folder Name	
	DATA3	File Name	

Now type “**B**” – which is the polling tally command. The CardMaster should send in text format, comma separated, all of the transactions since the last time you marked a transaction (as the end of the previous transaction dump).

```
01,0017,0001,03/07/02,13:37,1,1,1,123456,0016.90,xxx850,xxxx80,404451
01,0018,0002,03/07/02,13:41,1,1,1,125879,0005.20,xxxx85,xxxx80,x89999
01,0019,0432,03/07/03,15:44,1,2,2,894494,0084.30,xxx164,xxxxxxx,xxxxxxx
01,0020,0214,03/07/04,04:30,1,1,1,23145,0023.40,xxxx12,xxxxxxx,xxxxxxx
```

Once you have the tally (list of transactions) you must save the data. You do so by returning to the “**Transfer**” button in the top row of the terminal screen; and then clicking on “**capture text**”. Then click on “**stop**”. This closes and saves your data file which you will use with Excel® to create the spreadsheet data..

Now you will want to type “**L**” on the screen HyperTerminal screen at the semi-colon prompt. This command will show the last transaction polled. This information will help you decide which transaction to put the marker on by using the below “**X**” command.

It is important to now type “**X**” for the command to “Mark” and follow the “**X**” immediately by the 4 digit (must have leading “0’s”, i.e. 0001) number that represents the last transaction polled. This will be the starting point for the next polling.

Retype “X” and verify the number shown after the “X” is the same number as the number of the last transaction polled. If so, press “enter” again and you are back at the colon.

NOW type “S” for save.

Then type “Shift” and “6” at the same time. This will exit the CardMaster unit.

Then Close “HyperTerminal” .

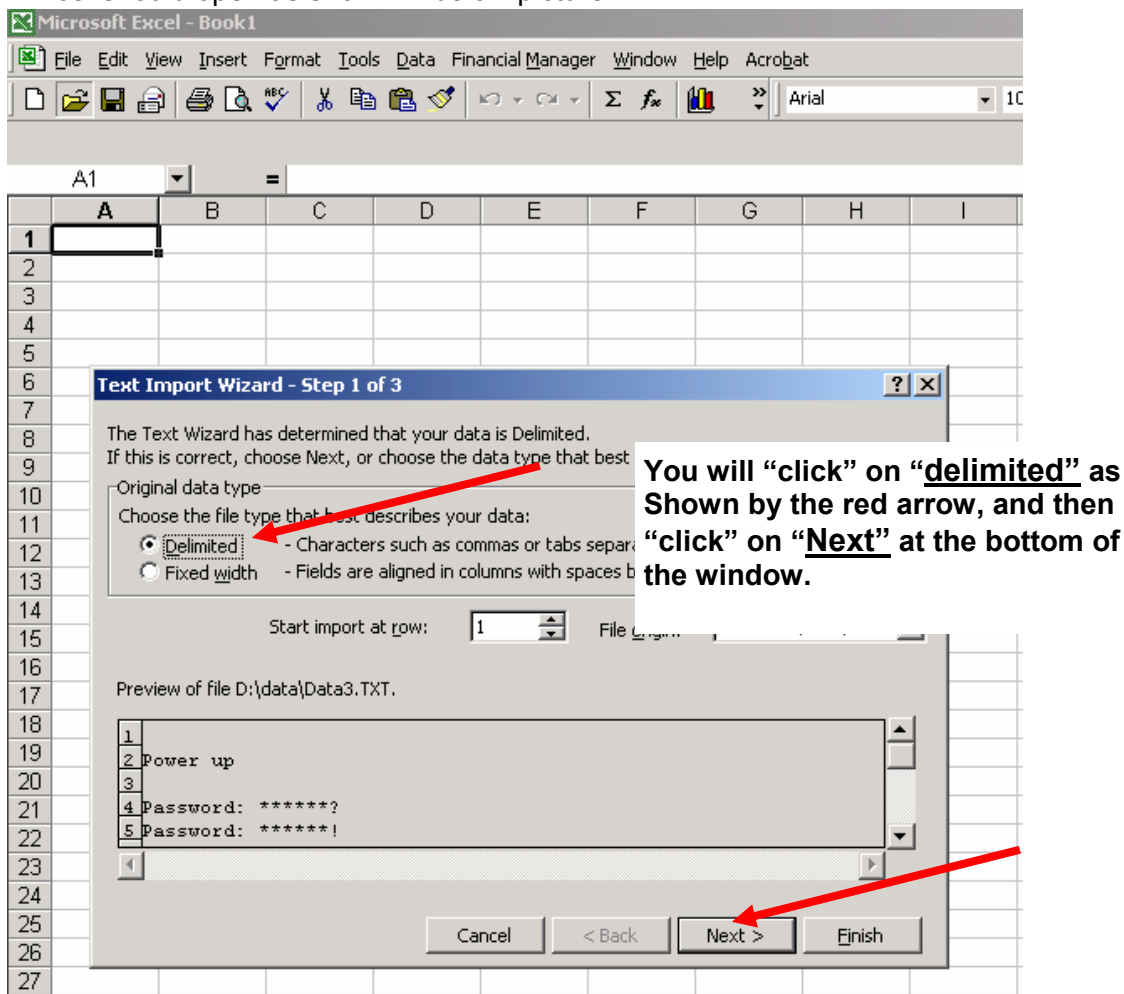
At this point you are ready to convert the saved TEXT file to Excel.

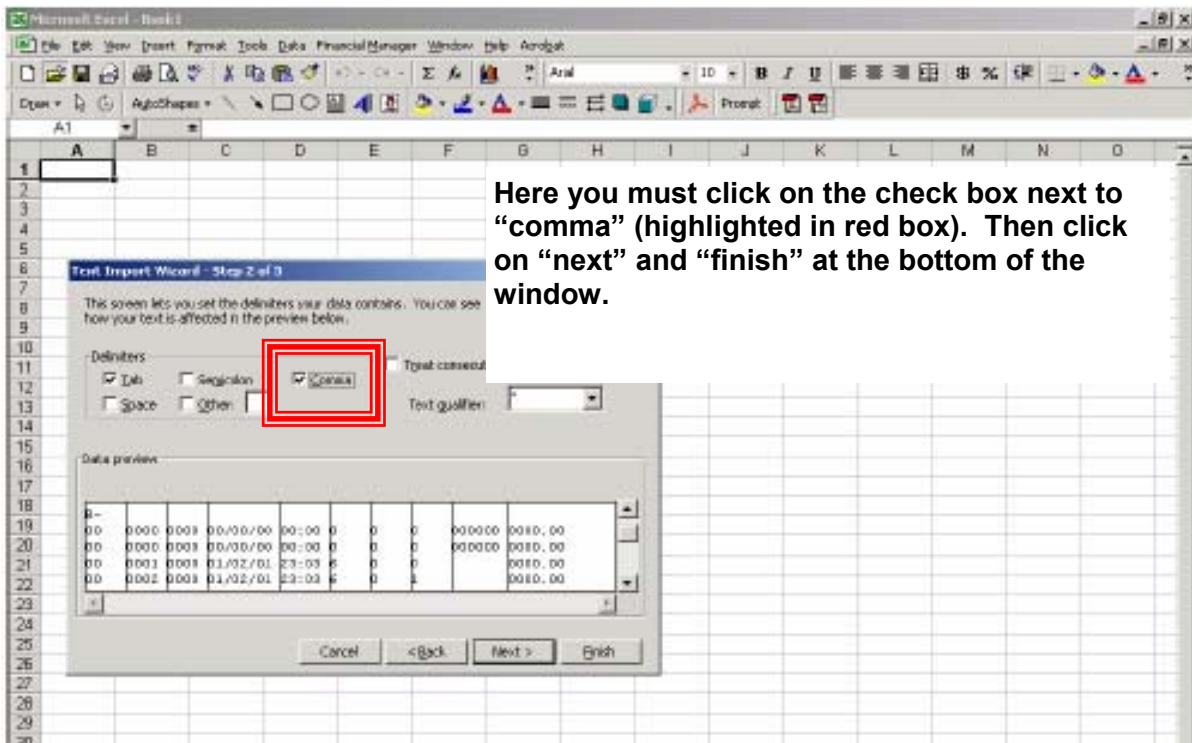
You will open Excel.

You will go to “file” and then “open”, and at the bottom of the window box that opens you will open “any files” so you can see all of the files.

Pick the text file and click on it (or press open/save)

Excel should open as shown in below picture:





This will have imported your text file into Excel®. At this time save your new file as an Excel® with a name and date so it has it’s own file name. The format the columns with labels at the top row, using “format-cell-alignment-wrap text”, and format - autofit column. Your document should look like the below sample.

Site	Transaction Number	Card No	Date	Time	Transaction Type	Hose Number	Product No	Misc 1 Odometer	Gallons	Misc 2 Tractor	Misc 3 Reefer	Misc 4 Job No.
1	17	1	7/2/2003	13:37	1	1	1	123456	16.9	XXX850	XXXX80	404451
1	18	2	7/2/2003	13:41	1	1	1	125879	5.2	XXXX85	XXXX80	X89999
1	19	432	7/3/2003	15:44	1	2	2	894494	84.3	XXX164	XXXXXX	XXXXXX
1	20	214	7/4/2003	4:30	1	1	1	23145	23.4	XXXX12	XXXXXX	XXXXXX

Then you can sort the data in all the normal manners allowed by your spreadsheet software.

Your business is appreciated.

Cardlock Vending, Inc