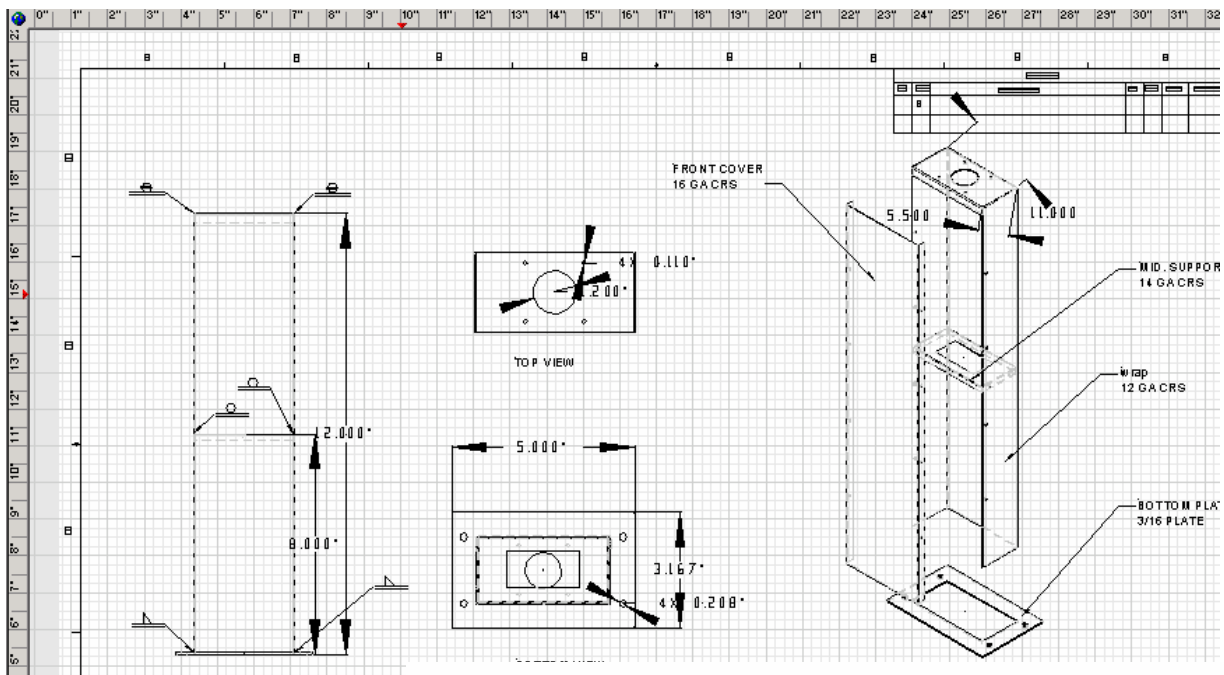




# CARDLOCK VENDING

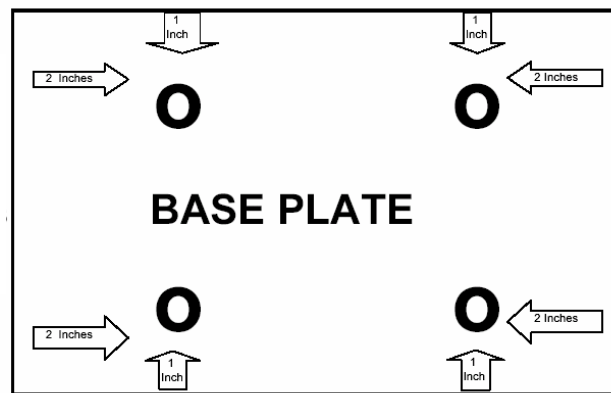
## CardMaster Pedestal

Cardlock Vending's Pedestal for CardMaster is an attractive and sturdy product. It is 48" high. The column section is 11" wide by 5.5" deep (front to back). It has a support section half way up to provide rigidity. The base plate is 9.5" front to back and 15" side to side (wide). The base plate is 3/16" steel plate, and the 0.625" bolt holes are 11" center to center on the width, and 5.5" center to center front to back. The pedestal walls are #12 gauge sheet steel, and the front cover is #16 gauge steel. The entire unit is Powder Coated for corrosion protection and for long term attractiveness.



15 Inches

- Pedestal column 11" x 5"
- Base plate holes and column holes are 5/8"
- 5/8" x 1/2" long pad studs are supplied by the customer



9 1/2  
Inches

**Cardlock Vending, Inc.**  
**Phone: (425) 487-8724**

**13406 NE 177th Place**  
**(888) 487-5040**

**Woodinville, WA 98072**  
**Fax: (425) 487-6644**

[www.cardlockvending.com](http://www.cardlockvending.com)